

Capture the World in Every Dimension

MEASURE WHERE OTHERS CAN'T

RTK + SLAM Fusion: The Future of Surveying is Here



- Centimeter Accuracy in Tunnels & Under-passes.



- Advanced SLAM Technology.



- Zero Signal? Zero Stress.



- Contactless Measurement: Simply snap a photo to get coordinates.

Dominate the Site

Stop wasting time with clunky gear. Own the data, crush the deadline, and do it all solo with elite 3D performance.



How can you speed up your reality capture projects?

In today's fast-paced construction, surveying, and engineering environments, professionals need dependable ways to capture accurate spatial data—no matter the conditions. Whether working outdoors, indoors, or in GNSS-challenged areas, tasks like site documentation, utility mapping, volume calculations, and progress tracking demand both precision and efficiency.

SpaceEx GeoFusion (SLAM + RTK) is built to meet these demands. By combining advanced multi-sensor technologies—LiDAR-based SLAM, visual SLAM, inertial measurement, and GNSS with RTK corrections—it delivers consistent, reliable positioning even in the most complex environments. From dense construction zones to tunnels and mining sites, it ensures dependable results wherever your work takes you.

Why choose SpaceEx GeoFusion?

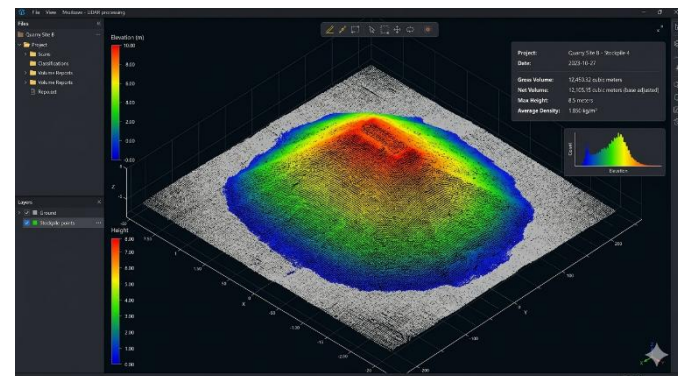
- » Capture data effortlessly while on the move with a truly portable system
- » Streamline your workflow from field collection to final output
- » Achieve survey-grade accuracy without complex setups
- » Scan everything from open outdoor spaces to detailed indoor environments
- » Seamlessly integrate with your existing software ecosystem for a complete solution



Scan with Authority. Execute with Power.

Don't just record the site—command it. The **SpaceEx GeoFusion** puts elite, one-person data capture in your palm with a real-time preview that shuts down uncertainty. If you didn't see it, you didn't scan it; the **SpaceEx GeoFusion** ensures you never leave a site unfinished. Crush complex post-processing and generate high-octane 3D clouds and orthophotos that prove your precision.

One operator. Zero gaps. Total documentation.



One Vision. One Flow.

The **SpaceEx GeoFusion** dissolves the clutter of fragmented tools into a single, unified rhythm. Forget the stress of juggling multiple devices—experience an end-to-end journey where data flows effortlessly from the first step on-site to the final deliverable. Powered by intuitive sensor fusion, it's not just a tool; it's a **seamless extension of your expertise**, delivering survey-grade clarity with every move you make.

Next-Generation Field-to-Finish Excellence

In the Field: Effortless Reality Capture

The field software is your window into the invisible. As you move through complex environments—be it a dense forest, an underground tunnel, or a sprawling urban site—the **SpaceEx GeoFusion** interface grows with you.

- **Guided Intuition:** No more fighting with complex menus. The software flows with your movement, offering a natural, real-time preview of your point cloud as it's born.
- **The Fusion Advantage:** By blending the absolute positioning of **RTK** with the fluid movement of **SLAM**, the software anchors your data to the earth with a gentle, unwavering hand.
- **Total Awareness:** See your coverage unfold instantly. It gives you the peace of mind to know the job is done right before you ever leave the site.

In the Studio: Distilling Clarity from Complexity

Once you step back into the office, the **SpaceEx GeoFusion Studio** takes over, transforming raw energy into polished insights. The "grind" of post-processing is replaced by a streamlined, organic workflow.

- **Seamless Refinement:** The software breathes life into your field data, cleaning, aligning, and optimizing point clouds with intelligent algorithms that understand the geometry of the world.
- **A Unified Canvas:** From calculating volumes to generating orthophotos, every tool is right where you expect it to be. The transition from a "cloud of points" to a "usable map" feels like a natural evolution rather than a technical chore.
- **Consistent Growth:** Designed for teams that value time as much as accuracy, it allows your projects to move from capture to delivery in one continuous, uninterrupted wave.